

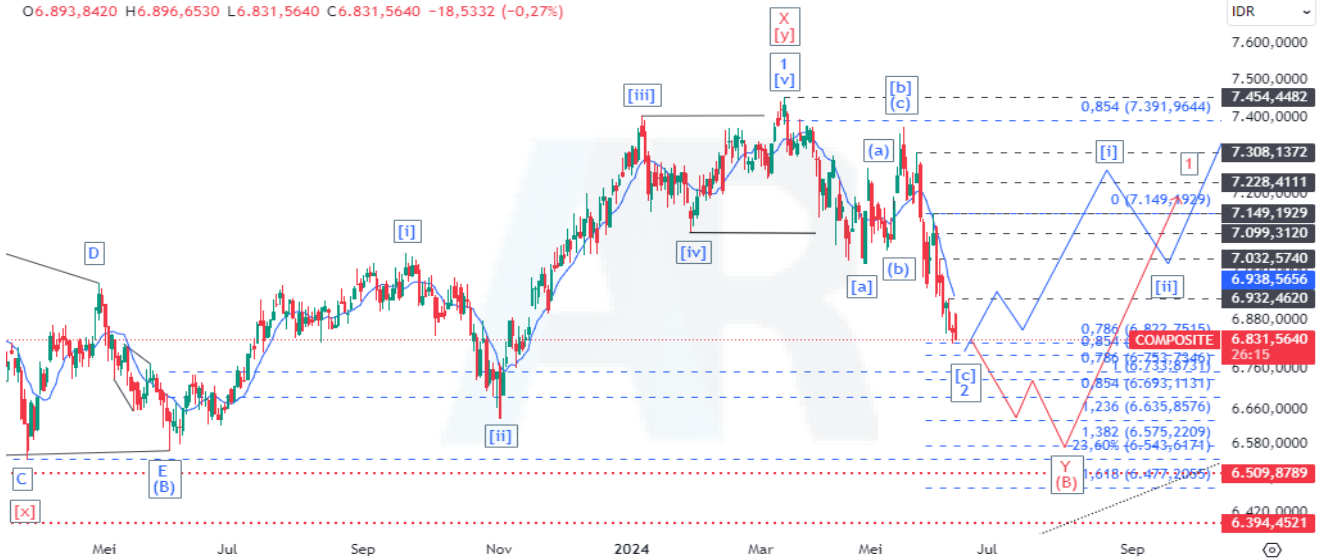
JAKARTA COMPOSITE INDEX (JCI) : 6831.564 (0.27%)

Value : RG 7.459 T (NG 6.773 T)

Daily Range (est) : 6795 – 6840

Daily Signal
"Forecast" : 

O6.893,8420 H6.896,6530 L6.831,5640 C6.831,5640 -18,5332 (-0,27%)



Commentary: JCI chart dropped 0.27% at level 6831.564 during the end of trading session on 13 June 2024. JCI tends to start a near-term uptrend toward 7032 if it rises above 6932 as the nearest resistance. However, JCI may extend losses toward 6753 – 6794 since it remains below the SMA-10 line. Support level for JCI are at 6794, 6753 and 6693, while resistance level are at 6932, 7032, 7099 and 7149. Based on indicator, MACD is signifying a bearish momentum.

Komentar: IHSG melemah 0.27% di level 6831.564 pada akhir perdagangan 13 Juni 2024. IHSG cenderung akan mengawali tren naik jangka pendek menuju 7032 apabila mampu menguat di atas 6932 sebagai resisten terdekat. Meski demikian, IHSG bisa saja melanjutkan pelemahannya menuju 6753 – 6794 karena masih berada di bawah garis SMA-10. Level support IHSG berada di 6794, 6753 dan 6693, sementara level resistennya di 6932, 7032, 7099 dan 7149. Berdasarkan indikator MACD menandakan momentum bearish.

*Analisis di atas dapat berubah dan akan diperbaharui apabila ada perubahan mendasar dari faktor teknis analisis
*The analysis above may change and will be updated whenever there is a fundamental change from the technical analysis factor



PT Sumber Alfaria Trijaya Tbk. (AMRT) 2720

ROE: 20.70%; PER: 31.70x; EPS: 85.80; PBV: 6.57x; Beta: 0.00

Recommendation: **BUY ON WEAKNESS**



Commentary: AMRT price fell at level 2720 during the end of trading session on 13 June 2024. AMRT tends to continue the preceding downtrend toward a support zone of 2560 – 2590 since the daily chart is still below the SMA-60 line. Based on indicator, MACD in a neutral condition. **BUY ON WEAKNESS at price range 2560 – 2630 with the nearest target price at 2910.**

Komentar: AMRT ditutup melemah di level 2720 pada 13 Juni 2024. AMRT cenderung akan melanjutkan tren turun yang terbentuk sebelumnya menuju area support 2560 – 2590 karena chart hariannya masih di bawah garis SMA-60. Berdasarkan indikator MACD dalam kondisi netral. **BUY ON WEAKNESS pada rentang harga 2560 – 2630 dengan target harga terdekat di 2910.**

Support: 2560

Resistance: 2910, 2980, 3030, 3100 and 3150

Indicator	Status
MACD (12,26,9)	Neutral



PT AKR Corporindo Tbk. (AKRA) 1590

ROE: 15.70%; PER: 13.42x; EPS: 118.48; PBV: 2.10x; Beta: 0.35

Recommendation: **TRADING BUY**



Commentary: AKRA price unchanged at level 1590 during the end of trading session on 13 June 2024. AKRA is hovering slightly above a key support of 1535 and is expected to rebound soon as long as the price remains above that level. Based on indicator, MACD is signifying a bullish momentum. **TRADING BUY at price range 1500 – 1550 with the nearest target price at 1650.**

Komentar: AKRA ditutup tidak berubah di level 1590 pada 13 Juni 2024. AKRA bergerak di atas support penting 1535 dan diperkirakan akan segera rebound selama harga tetap bertahan di atas level tersebut. Berdasarkan indikator MACD menandakan momentum bullish. **TRADING BUY pada rentang harga 1500 – 1550 dengan target harga terdekat di 1650.**

Support: 1500

Resistance: 1650, 1695, 1730 and 1785

Indicator	Status
MACD (12,26,9)	Bullish



PT Bank Jago Tbk. (ARTO) 2140

ROE: 1.03%; PER: 338.61x; EPS: 6.32; PBV: 3.49x; Beta: 1.90

Recommendation: **SPECULATIVE BUY**



Commentary: ARTO price unchanged at level 2140 during the end of trading session on 13 June 2024. ARTO will extend the correction structure toward next Fibonacci support at level 1870 if the price breaks below 2030 as the nearest support. Based on indicator, MACD is signifying a bearish momentum. **SPECULATIVE BUY at price range 1900 – 2010 with the nearest target price at 2300.**

Komentar: ARTO ditutup tidak berubah di level 2140 pada 13 Juni 2024. ARTO akan melanjutkan struktur koreksinya menuju support Fibonacci berikutnya di level 1870 apabila harga menembus ke bawah 2030 sebagai support terdekat. Berdasarkan indikator MACD menandakan momentum bearish. **SPECULATIVE BUY pada rentang harga 1900 – 2010 dengan target harga terdekat di 2300.**

Support: 1870

Resistance: 2300, 2440, 2520, 2610 and 2730

Indicator	Status
MACD (12,26,9)	Bearish

PT Bank Negara Indonesia (Persero) Tbk. (BBNI) 4480

ROE: 13.86%; PER: 7.76x; EPS: 577.40; PBV: 1.08x; Beta: 0.92

Recommendation: SPECULATIVE BUY



Commentary: BBNI price rose at level 4480 during the end of trading session on 13 June 2024. BBNI is testing a fractal support of 4310, a break below which will open the way for the price to decline to the next fractal at level 4210. Based on indicator, MACD in a neutral condition. **SPECULATIVE BUY at price range 4250 – 4350 with the nearest target price at 4660.**

Komentar: BBNI ditutup menguat di level 4480 pada 13 Juni 2024. BBNI sedang menguji support fraktal 4310, dimana penembusan di bawahnya akan membuka jalan untu harga melemah menuju fraktal berikutnya di level 4210. Berdasarkan indikator MACD dalam kondisi netral. **SPECULATIVE BUY pada rentang harga 4250 – 4350 dengan target harga terdekat di 4660.**

Support: 4210

Resistance: 4660, 4820, 4930, 5150 and 5275

Indicator	Status
MACD (12,26,9)	Neutral

**Analisis di atas dapat berubah dan akan diperbaharui apabila ada perubahan mendasar dari faktor teknis analisis
 The analysis above may change and will be updated whenever there is a fundamental change from the technical analysis factor

PT Telekomunikasi Indonesia Tbk. (TLKM) 2840

ROE: 14.33%; PER: 11.62x; EPS: 244.32; PBV: 1.67x; Beta: 0.26

Recommendation: **BUY ON WEAKNESS**



Commentary: TLKM price fell at level 2840 during the end of trading session on 13 June 2024. TLKM will rebound to continue the preceding uptrend if the price is still above a Fibonacci support of 2780. Based on indicator, MACD in a neutral condition. **HOLD or BUY ON WEAKNESS at price range 2780 – 2820 with the nearest target price at 2980.**

Komentar: TLKM ditutup melemah di level 2840 pada 13 Juni 2024. TLKM akan rebound untuk melanjutkan tren naik sebelumnya jika harganya masih berada di atas support Fibonacci 2780. Berdasarkan indikator MACD dalam kondisi netral. **HOLD atau BUY ON WEAKNESS pada rentang harga 2780 – 2820 dengan target harga terdekat di 2980.**

Support: 2780

Resistance: 2980, 3100, 3200, 3310 and 3410

Indicator	Status
MACD (12,26,9)	Neutral

STOCK RECOMMENDATION : IDX30

Stock	Date	Buy Area	Target Price	Protection	Status
ACES	14/6/2024	810 – 825	885, 940, 965 and 1025	795	Hold/ Trading Buy
ADRO	12/6/2024	2600 – 2660	2890, 2990 and 3130	2580	Buy on Weakness
AMRT	22/5/2024	2560 – 2630	2910, 2980, 3030, 3100 and 3150	2560	Buy on Weakness
ANTM	11/6/2024	1160 – 1210	1380, 1435, 1525 and 1595	1160	Hold/ Speculative Buy
AKRA	13/6/2024	1500 – 1550	1650, 1695, 1730 and 1785	1500	Trading Buy
ARTO	14/6/2024	1900 – 2010	2300, 2440, 2520, 2610 and 2730	1870	Speculative Buy
ASII	5/6/2024	4350 – 4450	4500, 4700, 4870 and 5000	4290	Hold/ Take Profit
BBCA	14/6/2024	9000 – 9150	9575, 9850 and 10100	9000	Hold/ Trading Buy
BBNI	12/6/2024	4250 – 4350	4660, 4820, 4930, 5150 and 5275	4210	Speculative Buy
BBRI	14/6/2024	4250 – 4290	4630, 4820, 5050, 5200 and 5400	4240	Hold/ Speculative Buy
BMRI	14/6/2024	5650 – 5750	6350, 6800 and 7125	Switch to 5650	Hold/ Buy on Weakness
BRPT	11/6/2024	900 – 950	1025, 1100, 1230 and 1330	900	Buy on Weakness
CPIN	14/5/2024	4900 – 5000	5550, 5775 and 6000	4790	Hold/ Accumulative Buy
GOTO	10/6/2024	-	57 – 60	51	Sell on Strength
INCO	13/6/2024	3900 – 4020	4440, 4670, 4870 and 5100	3860	Speculative Buy



STOCK RECOMMENDATION : IDX30

Stock	Date	Buy Area	Target Price	Protection	Status
ICBP	12/6/2024	9900 – 10100	10900, 11150, 11600 and 11900	9800	Buy on Weakness
INDF	6/6/2024	5650 – 5750	6250, 6400, 6600 and 6750	5450	Accumulative Buy
INKP	13/6/2024	8000 – 8150	8950, 9300, 9700 and 10125	7950	Hold/ Accumulative Buy
ITMG	29/4/2024	24000 – 24500	25850, 26275, 27050 and 27900	24000	Hold
KLBF	11/6/2024	1500 – 1540	1670, 1730, 1800 and 1870	1470	Hold/ Buy on Weakness
MDKA	13/6/2024	2200 – 2320	2620, 2770, 2890 and 3000	2190	Hold/ Buy on Weakness
MEDC	13/6/2024	1230 – 1250	1385, 1495, 1555, 1635 and 1705	1230	Hold/ Buy on Weakness
PGAS	13/6/2024	1350 – 1390	1500, 1585, 1640 and 1730	1350	Hold/ Buy on Weakness
PGEO	13/6/2024	1070 – 1110	1200, 1250, 1290, 1400, 1460 and 1530	1060	Hold/ Buy on Weakness
PTBA	31/5/2024	2300 – 2350	2560, 2640 and 2750	2300	Speculative Buy
SMGR	13/6/2024	3250 – 3350	3900, 4020 and 4340	3240	Speculative Buy
TKIM	13/6/2024	7950 – 8000	8500, 9075, 9450 and 9600	7950	Hold
TLKM	14/6/2024	2780 – 2820	2980, 3100, 3200, 3310 and 3410	Switch to 2780	Hold/ Buy on Weakness
UNTR	12/6/2024	21700 – 21800	23700, 24200, 24750 and 25450	21700	Hold/ Buy on Weakness
UNVR	6/6/2024	2850 – 2920	3300 and 3470	2850	Buy on Weakness

Indicators

- *MACD (Moving Average Convergence Divergence):* trend-following momentum indicator.

RESEARCH TEAM
(62-21) 520-6678 ext. 610 / 612

Disclaimer: PT Binaartha Sekuritas has compiled this report in good faith, using information believed to be reliable. PT Binaartha Sekuritas and its analyst take no responsibility for the accuracy of the information contained in this report. This report has been produced for distribution to clients of PT Binaartha Sekuritas only. This report is not an invitation to buy or sell any security. PT Binaartha Sekuritas may have used the information in this report prior to publication. The company or its clients may have positions in or may from time to time buy or sell the securities mentioned in this report or other related securities.